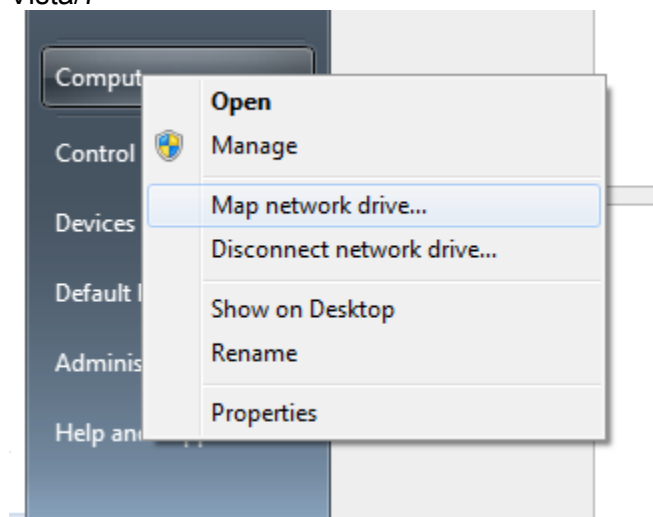


**Using WSUS Offline Updater**  
**2011-8-15**  
**M. Ward**

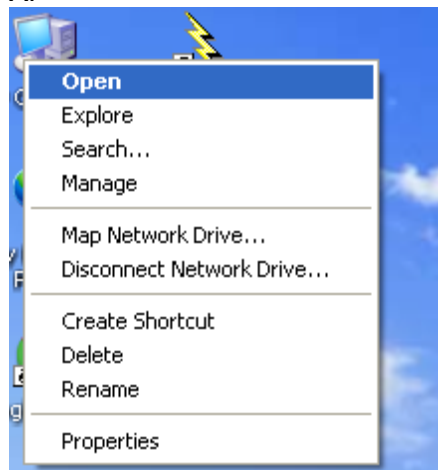
WSUS Offline Updater allows “bulk installation” of patches for Windows operating systems and Office products. Multiple runs of “UpdateInstaller” may be required and it is recommended that patch level of the system is checked by visiting <http://update.microsoft.com>.

Map a network drive to [slug.ceca.utc.edu](http://slug.ceca.utc.edu) - Right clicking on the computer icon or Start Menu entry should allow access to the “Map Network Drive” menu choice.

Vista/7

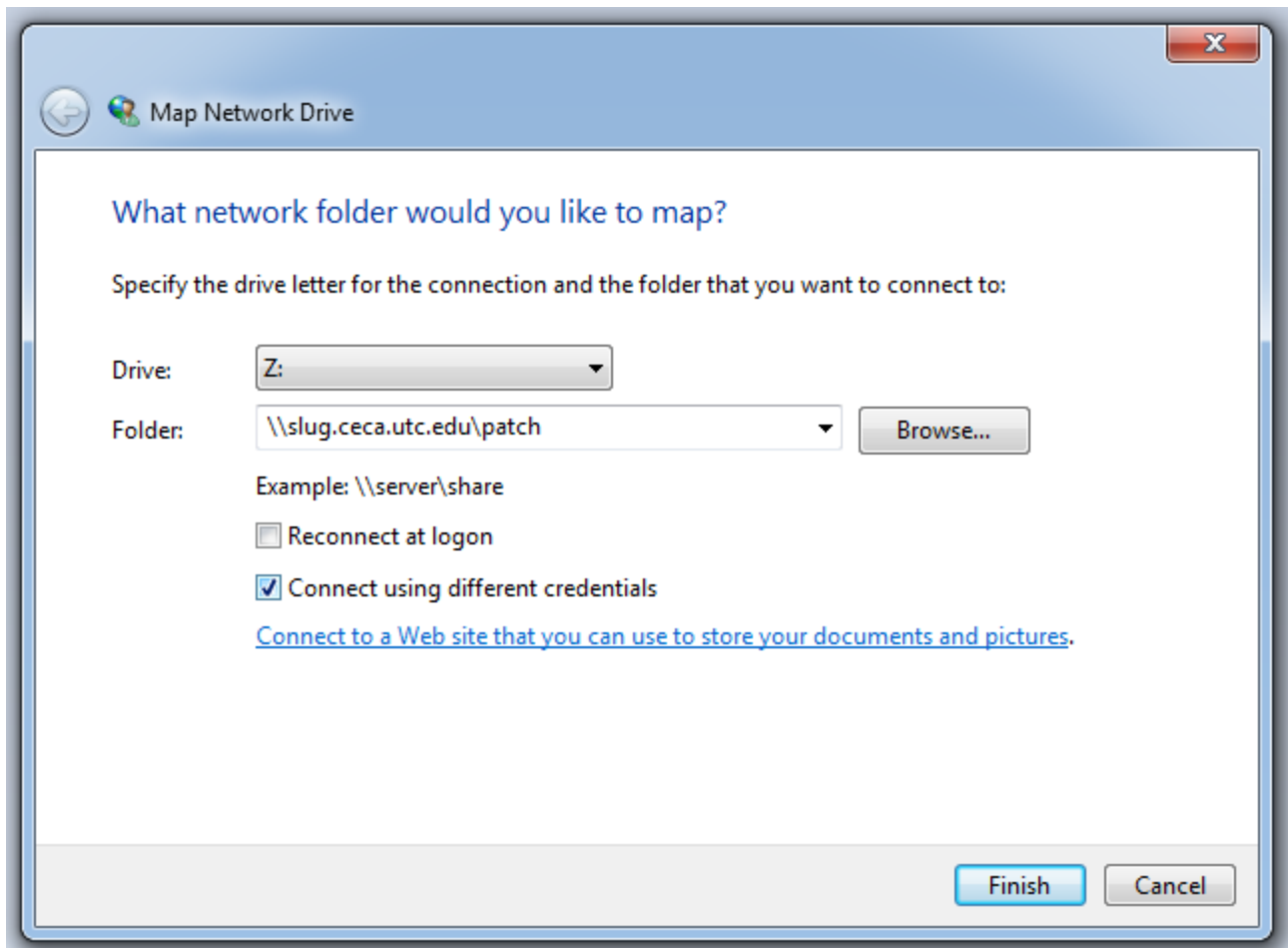


XP

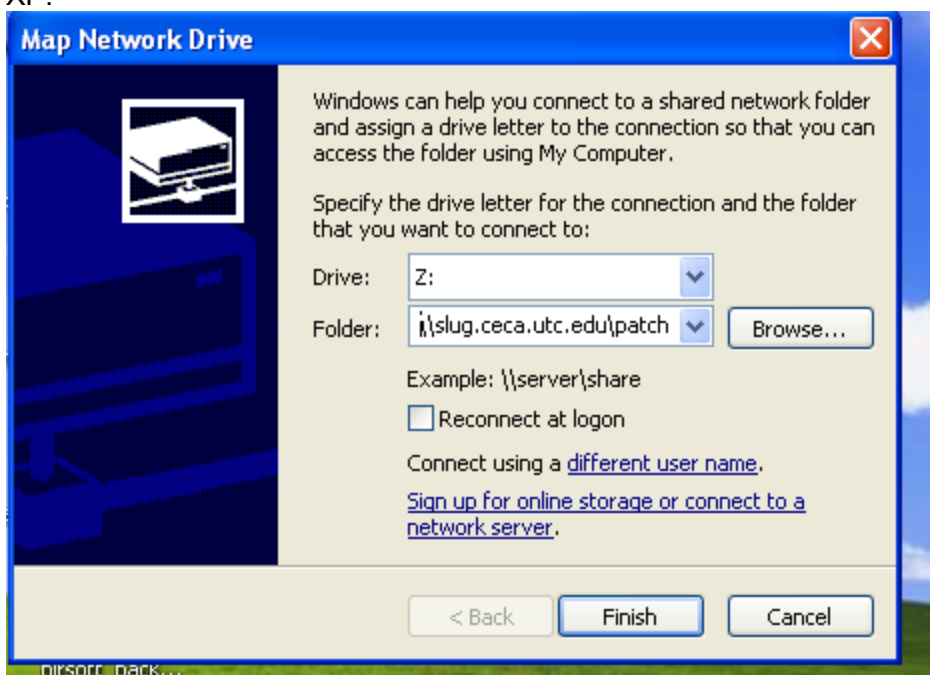


Assign the share to an unused drive letter. Make sure to uncheck “reconnect at login” and check “Connect using different credentials.”

Vista/7:

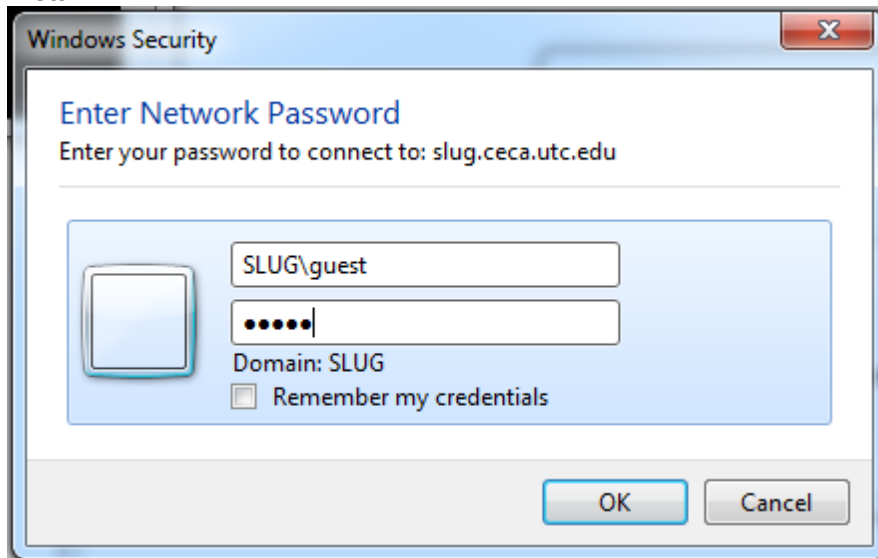


XP:

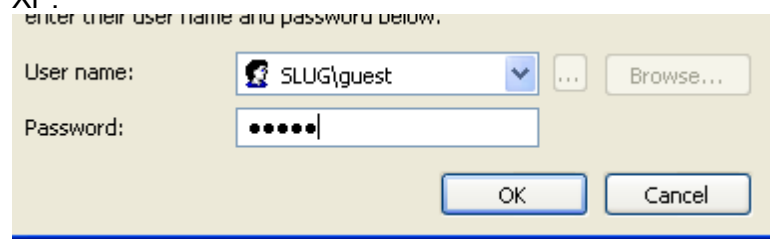


Specify the “domain” as SLUG (caps) with a username of guest, password of guest.

Vista/7:



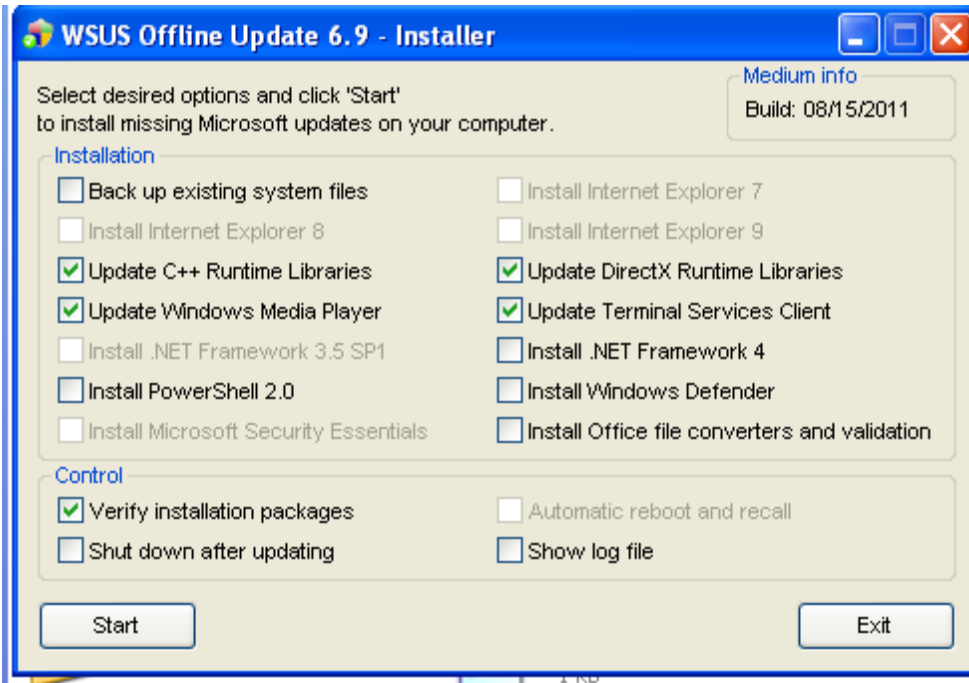
XP:



Start “UpdateInstaller”



Select your options



Watch it run.

```
C:\> DoUpdate /nobackup /updatecpp /updatedx /updatewmp /updatetsc /verify

Starting WSUS Offline Update (v. 6.9) at 11:22:58.07...
Checking user's privileges...
Determining system's properties...
Found OS caption: Microsoft Windows XP Professional
Found Microsoft Windows version: 5.1.2600 (wpx x86 enu sp3)
Checking medium content...
Medium build date: 08/15/2011
Medium supports Microsoft Windows (wpx enu).
Checking Windows Service Pack version...
Checking Windows Update Agent version...
Checking Windows Installer version...
Checking Windows Script Host version...
Checking Internet Explorer version...
Checking C++ Runtime Libraries' installation state...
Checking DirectX version...
Installing most recent DirectX End-User Runtime...
Installing ..\win\glb\directx_Jun2010_redist.exe...
Checking Windows Media Player version...
Installing most recent Windows Media Player...
Installing update 1 of 1...
Verifying integrity of ..\wpx\enu\wmp11-windowsxp-x86-enu.exe...
hashdeep.exe: Audit passed
Installing ..\wpx\enu\wmp11-windowsxp-x86-enu.exe...
```