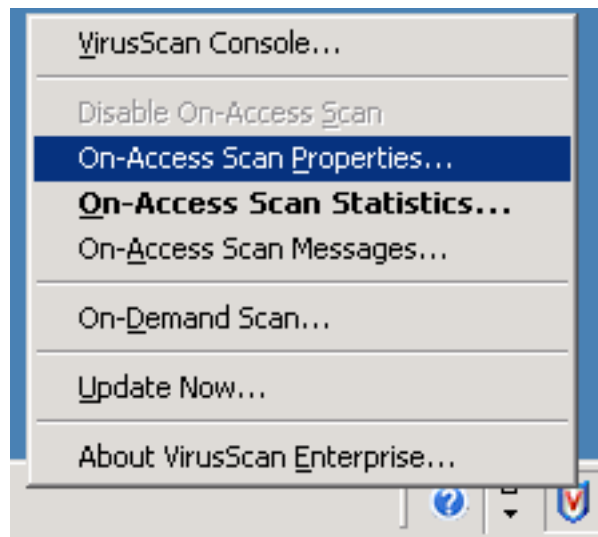
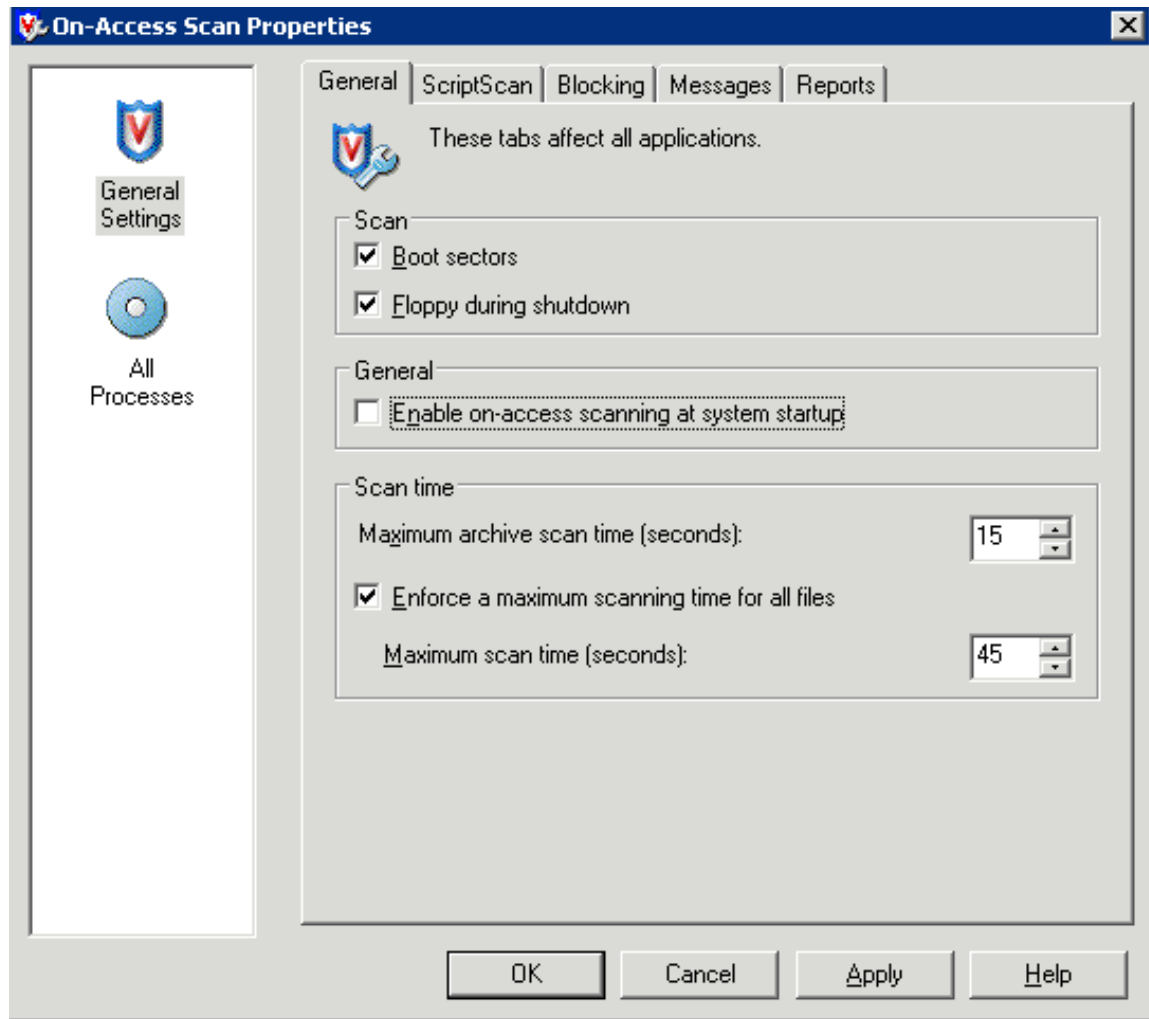


**Configuring McAfee Anti-Virus for Servers**  
**11/18/08**  
**Michael Ward/Scott Gast**

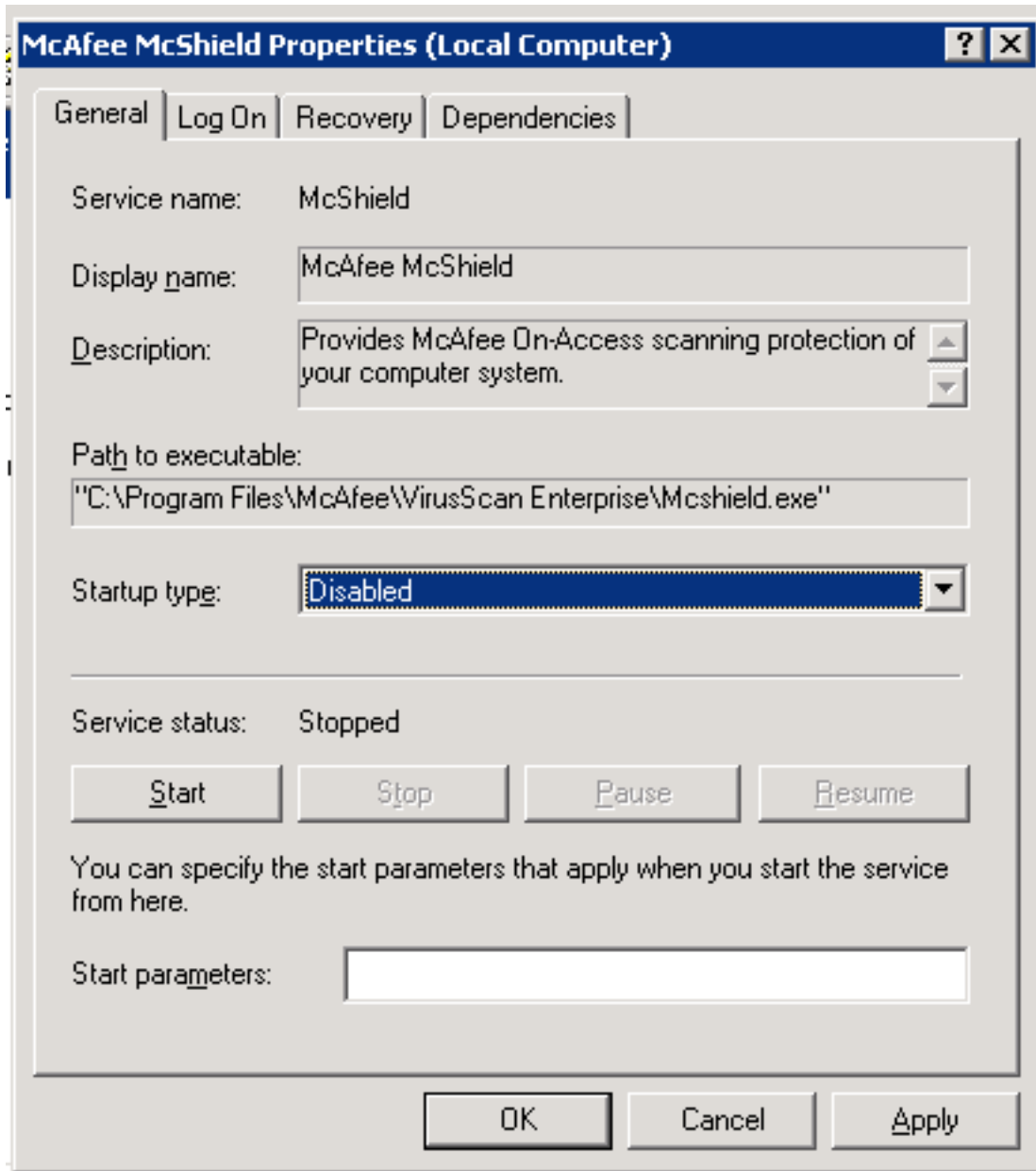
Installing the McAfee Enterprise Anti-Virus to have a minimal impact upon the functionality of Windows Servers requires several steps.

- 1. Download and install the McAfee client but do not allow it to restart the server.** Check the Windows Firewall and disable it. If you've enabled the Windows Firewall before installing the McAfee client, it will add exceptions.
- 2. Reboot the Server.** Verify the Windows Firewall settings, most servers will want it set to disabled.
- 3. Disable the On Access Scan.** By default McAfee scans every file as it is read (opened or copied).

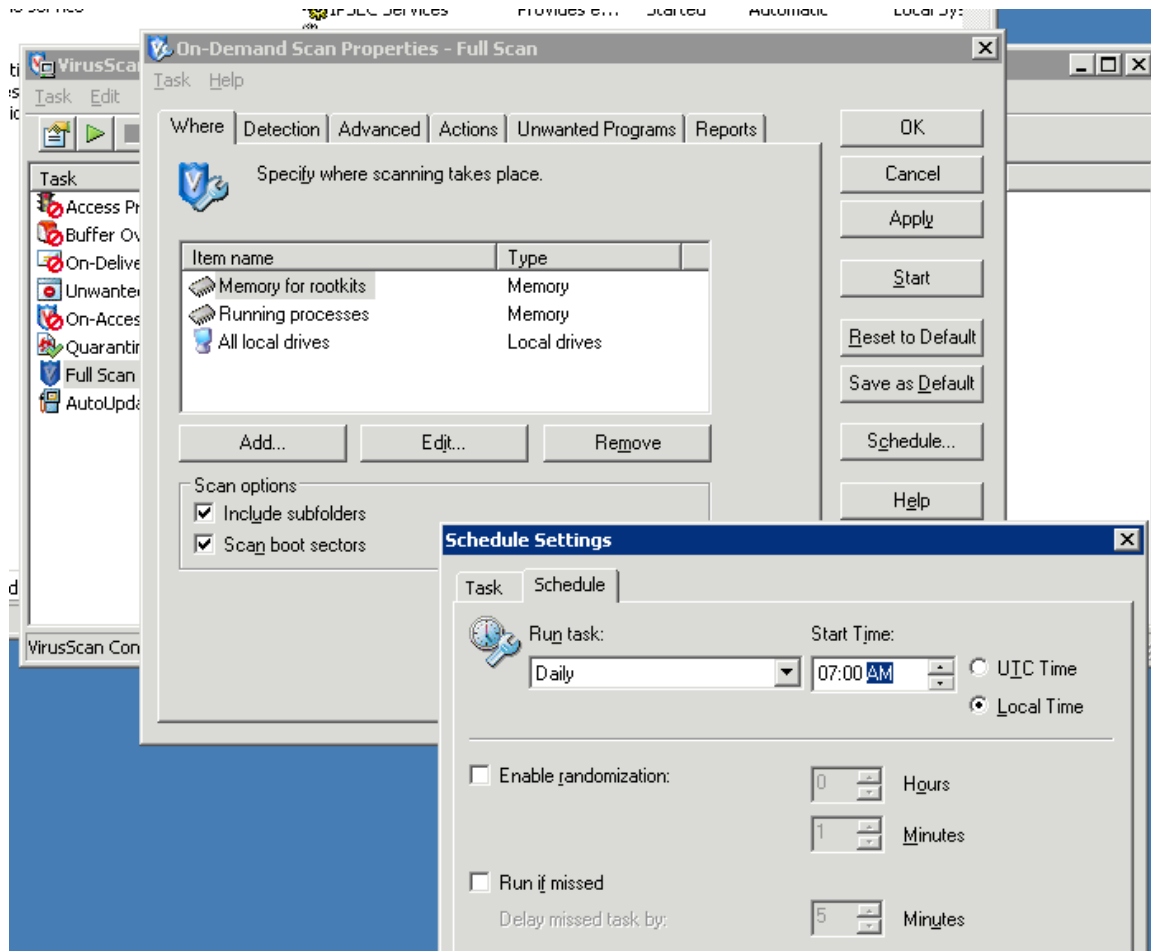




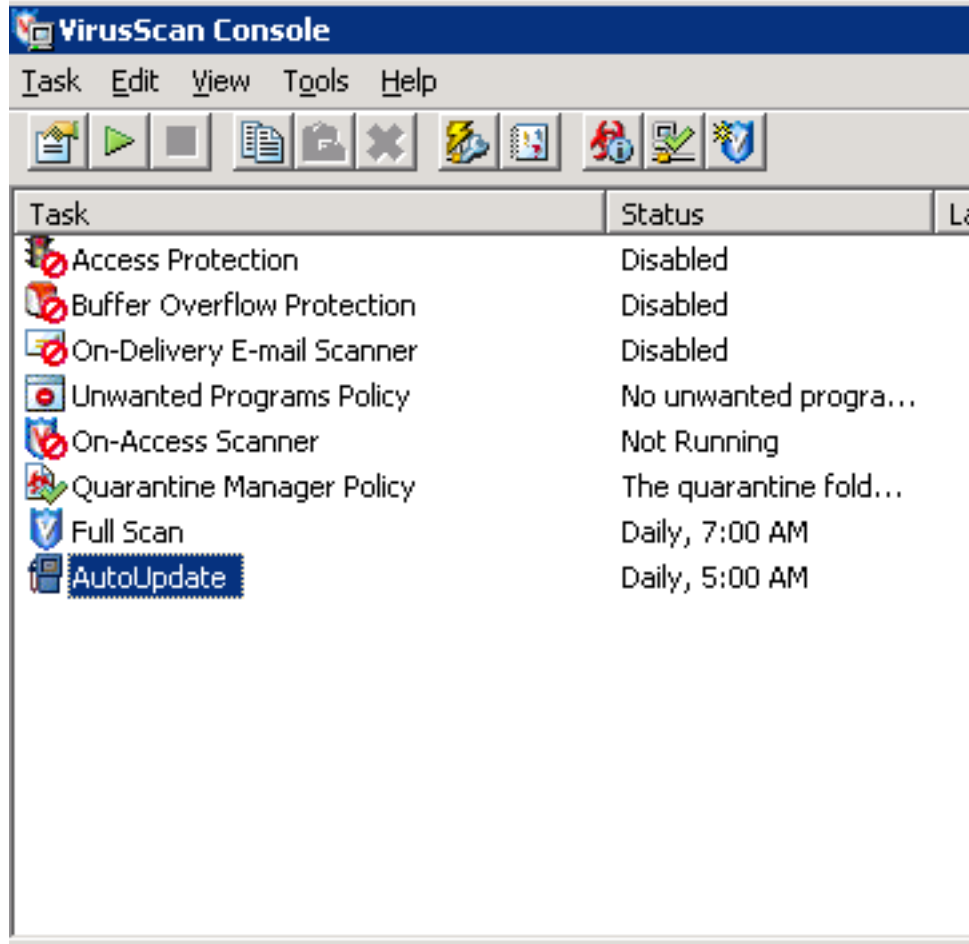
#### 4. Disable the McAfee McShield service.



**5. Enable a Scheduled Scan.** You'll probably want the Scheduled Update to happen before the Scheduled Scan.



**6. Verify the Settings at the Console.** You may want to disable Access Protection, Buffer Overflow Protection, and On-Delivery Email Scanning.



**7. Reboot the Server and Verify the Settings again.** You may have to repeat Step 3 and Step 4. After another reboot the settings should “take hold.”

VirusScan Console				
Task Edit View Tools Help				
Task	Status	Last Result	Last Run	
Access Protection	Disabled			
Buffer Overflow Protection	Disabled			
On-Delivery E-mail Scanner	Disabled			
Unwanted Programs Policy	No unwanted program...			
On-Access Scanner	Not Running			
Quarantine Manager Policy	The quarantine folder ...			
Full Scan	Daily, 6:00 AM	Cancelled, nothing f...	Wednesday, Novem...	
AutoUpdate	Not Scheduled		Tuesday, November ...	
(managed) Automatic Update (hourly)	Daily, 8:00 AM			
(managed) VScan Upgrade	Run immediately			

VirusScan Console